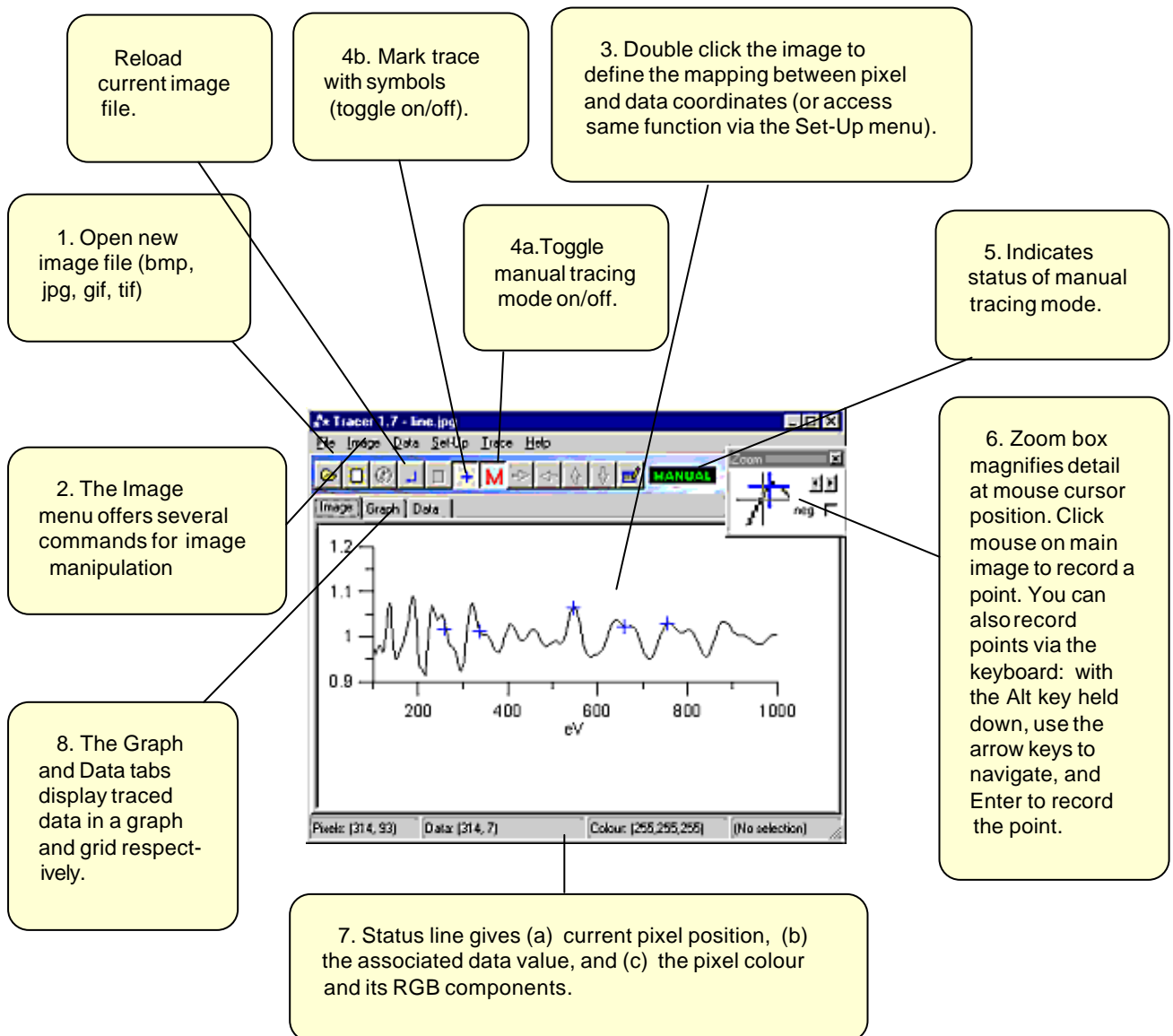


Getting Started With Tracer: Manual Trace

The main steps in a tracing job are:

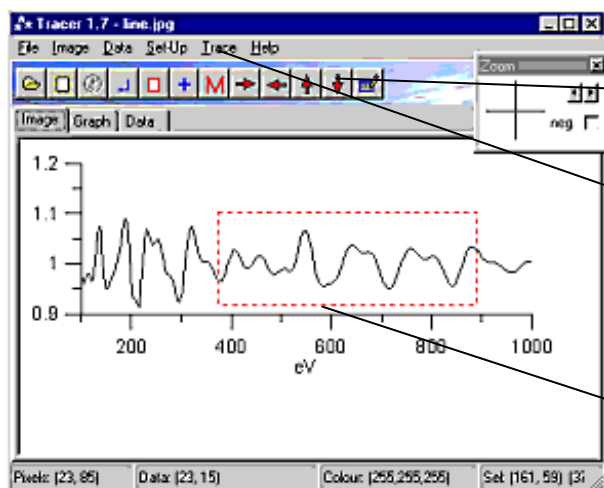
- (a) Load the image from a file on disk;
- (b) Define the mapping between pixels and data units for the image;
- (c) Record the points of interest;
- (d) Store or transfer the recorded points.

The Manual and Automatic traces differ only in step (c). In a manual trace, points are recorded by clicking the mouse. In an automatic trace, pixels satisfying user-defined criteria are recorded in a selected region of the image. To save traced data to disk, use the File|Save Data command (or right-click on the data grid). You can also select data in the grid, and copy it to the clipboard for pasting into a spreadsheet.



Getting Started With Tracer: Automatic Trace

The first step in an automatic trace is to select the region of interest with the mouse. This will appear as a rectangular red or grey area (depending on the colour depth of the image that you loaded). Several toolbutton and menu options will then become available.



Arrows allow you to nudge the selected area.

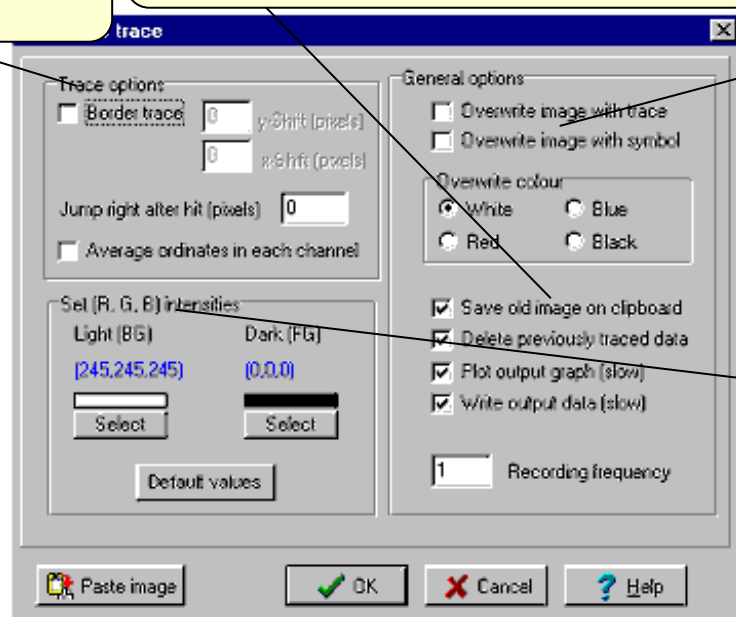
The Trace|Automatic command sets up the parameters for an automatic tracing procedure.

Selected region of interest.

Options help you handle difficult cases (thick lines, too many points etc.)

Various display and output options. Copying image to clipboard allows you to paste after original has been overwritten by the trace.

Select one of these to follow the trace on your image.



Colour range to detect. You will need to darken (reduce) the BG colour if your image has an off-white background.